



RC2-100A Screw Compressor– R134a

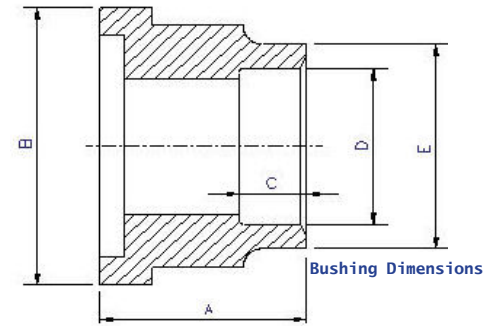
Specifications		Displacement	CFM	60 Hz	69
Compressor	Rated Speed	Rpm	60 Hz	3550	
	Volume Ratio	Vi	2.6 (standard other Vi available)		
	Nominal HP	23hp at 60Hz			
	Capacity Control	%	33%, 66% & 100% Step Capacity Control, 33%~100% Continuous Stepless Capacity Controls		
	Lubrication	Differential Pressure Feed Lubricant			
	Motor	Type	3 Phase, 2 Pole, Squirrel Cage, Induction Motor		
Insulation		Class F			
Protection		3 PTC Protection 1 per winding			
Lubricant Charge	Gallons	1.9			
Oil Heater	Watts	150			
Hydrostatic Pressure test	lb/in ² G	597			
Weight	Pounds	606			

Standard Compressors Accessories

- Modulating Slide Capacity
- Weather Proof Terminal Box for outdoor applications
- 115/1/60 Control Voltage
- 115/1/60 Crankcase heater
- Discharge Check Valve
- Discharge Service Valve (Discharge Stop Valve) with standard connection sizes and supplied with flanges and bushings
- Suction Service Valve (Suction Stop Valves) with standard connection sizes and supplied with flanges and bushings
- Oil Level Float Switch
- Suction Filter
- Oil Filter
- PSI Relief Valve
- Oil Sight Glass
- PT1000 for Reading Motor Temp
- INT69HBY supporting motor and discharge (PTC) temperature sensor protection as well as Phase Loss and Phase Reversal at Start Up Only

Ports

- External Oil Cooler
- Liquid Injection (into screw chamber)
- Economizer
- Suction, Discharge & Oil Service



Connections			Part #	Bushing Dimensions				
Discharge Stop Valve	1 1/2"		3188-8100A					
Discharge Check Valve <small>(spring-horizontal)</small>	1 1/2"		3188-6100EA					
Suction Stop Valve	2"		3188-8700A					
Economizer	5/8" solder		N/A					
Liquid Injection <small>(chamber)</small>	3/8" flare		N/A					
Discharge Bushing	Copper Pipe Sizing 1 5/8"		3101-101AB	2.05"	2.95"	1.38"	1.64"	2.05"
Suction Bushing	Copper Pipe Sizing 2 1/8"		3131-101FA	1.99"	3.54"	1.18"	2.14"	2.56"

Optimized for R134a

MCC & LRA			Maximum Continuous Current	Y-Δ		Part Wind Start	
Hertz	Volts	Locked Rotor Amps (Y)		Locked Rotor Amps (D)	Locked Rotor Amps (D)	Locked Rotor Amps (DD)	
60	220	109	117	350	156	325	
60	460	52	60	180	84	175	